

HDS-7324/7332TVI-HDMI Series



Introduction:

HDS-7300TVI-HDMI series DVR (Digital Video Recorder) is a new generation recorder developed by HDPARAGON independently which can connect HD analog/network cameras and Coaxitron cameras and provide powerful surveillance. Combined with multiple advanced technologies, such as audio and video encoding & decoding technology, embedded system technology, storage technology, network technology and intelligent technology. It can both work alone as a recorder and cooperate with other devices to build a comprehensive surveillance system.

The HDS-7300TVI-HDMI series DVR are widely applied in the areas of finance, public security, military, communication, transportation, education

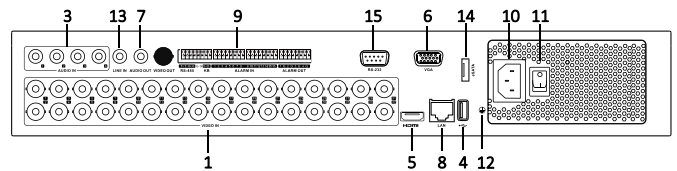
Available Models:

HDS-7324TVI-HDMI, HDS-7332TVI-HDMI

Main Features:

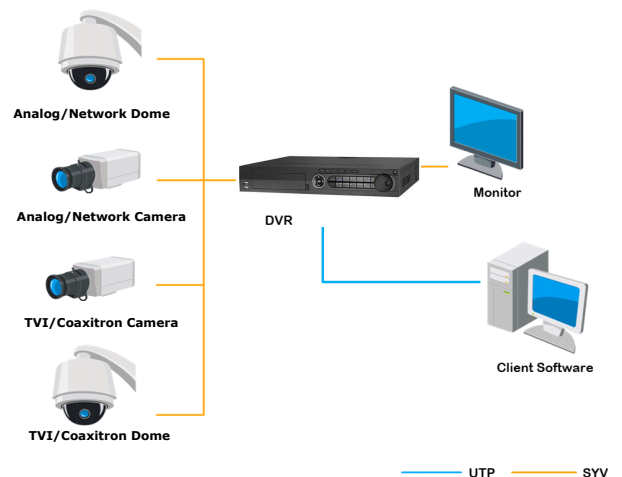
- Connectable to TVI and analog cameras;
- Connectable to the Coaxitron camera/dome with long transmission distance;
- Connectable to network cameras;
- Simultaneous HDMI and VGA outputs at up to 1920×1080P resolution.
- New GUI and supports starting record with one key;
- Redundant recording, holiday recording schedule configuration;
- Instant playback for assigned camera during multi-channel live view mode;
- Support up to 24/32-ch synchronous playback; and reverse playback for multi-channel;
- Smart playback to go through less effective information;
- Manual video quality diagnostics;
- Support VCA alarm (line crossing detection and intrusion detection);
- Customization of tags, searching and playing back by tags;
- Locking and unlocking record files;
- Support HDD quota and group management; different capacity can be assigned to different cameras under quota mode;
- Provide 4 SATA interfaces and 1 eSATA interface for record and backup;
- 1 self-adaptive 10M/100M/1000M network interface;
- Support access by EZVIZ Cloud P2P;
- Support DDNS (Dynamic Domain Name System);
- Network detection function.

Physical Interfaces:



Index	Name
1	VIDEO IN
3	AUDIO IN, RCA Connector
4	USB Port
5	HDMI Interface
6	VGA Interface
7	VGA AUDIO OUT
8	LAN Network Interface
9	RS-485 Serial Interface, Keyboard Interface, ALARM IN and ALARM OUT
10	100~240V AC Power Input
11	Power Switch
12	GND
13	LINE IN
14	eSATA Interface
15	RS-232 Serial Port

Typical Application:



Specifications:

Model		HDS-7324TVI-HDMI	HDS-7332TVI-HDMI	
Video/ Audio input	Video compression	H.264		
	Analog and HD-TVI video input	24-ch	32-ch	
		BNC interface (1.0Vp-p, 75 Ω)		
	Supported camera types	720P/25, 720P/30, 720P/50, 720P/60, 1080P/25, 1080P/30, CVBS		
	IP video input	8-ch (up to 32-ch)	8-ch (up to 32-ch)	
		Up to 2MP resolution		
	Audio compression	G.711u		
Audio input	4-ch, RCA (2.0 Vp-p, 1 KΩ)			
Two-way audio in	1-ch, RCA (2.0 Vp-p, 1 KΩ)			
Video/ Audio output	HDMI / VGA output	1920 × 1080/60 Hz, 1280 × 1024/60 Hz, 1280 × 720/60 Hz, 1024 × 768/60 Hz		
	Encoding resolution	Main stream: 1080P (non-real-time) / 720P / WD1 / VGA / 4CIF / CIF		
		Sub-stream: WD1 (non-real-time) / 4CIF(non-real-time) / CIF / QCIF / QVGA		
	Frame rate	Main stream: 1/16 fps ~ Real time frame rate		
		Sub-stream: 1/16 fps ~ Real time frame rate		
	Video bitrate	32 Kbps-6 Mbps		
	Audio output	1-ch, RCA (Linear, 1KΩ)		
	Audio bitrate	64 Kbps		
	Dual-stream	Support		
	Stream type	Video, Video & Audio		
Synchronous playback	24-ch	32-ch		
Playback resolution	1080P / 720P / VGA / WD1 / 4CIF / CIF / QVGA / QCIF			
Network management	Remote connection	128		
	Network protocols	TCP/IP, PPPoE, DHCP, EZVIZ Cloud P2P, DNS, DDNS, NTP, SADP, SMTP, SNMP, NFS, iSCSI, UPnP™, HTTPS		
Hard disk	Type	4 SATA interfaces for 4 HDDs; 1 eSATA interface		
	Capacity	Up to 4 TB capacity for each disk		
External interface	Network interface	1; 10M / 100M / 1000M self-adaptive Ethernet interface		
	Serial interface	RS-232, RS-485, Keyboard		
	USB port	3 × USB2.0		
	Alarm in / out	16 / 4		
General	Power supply	100 ~ 240VAC, 47 ~ 63HZ		
	Consumption (without hard disks)	≤ 55W	≤ 65W	
	Working temperature	-10 °C ~ +55 °C (14 °F ~ 131 °F)		
	Working humidity	10% ~ 90%		
	Chassis	19-inch rack-mounted 1.5U chassis		
	Dimensions (W × D × H)	445 × 390 × 70 mm (17.5 × 15.3 × 2.7 inch)		
Weight (without hard disks)	≤ 5Kg (11.0lb)			